



ABA Fashions New

521/1, Gacha. Post-Gacha 1704

(23.935919, 90.367755)

20th & 21st May 2018





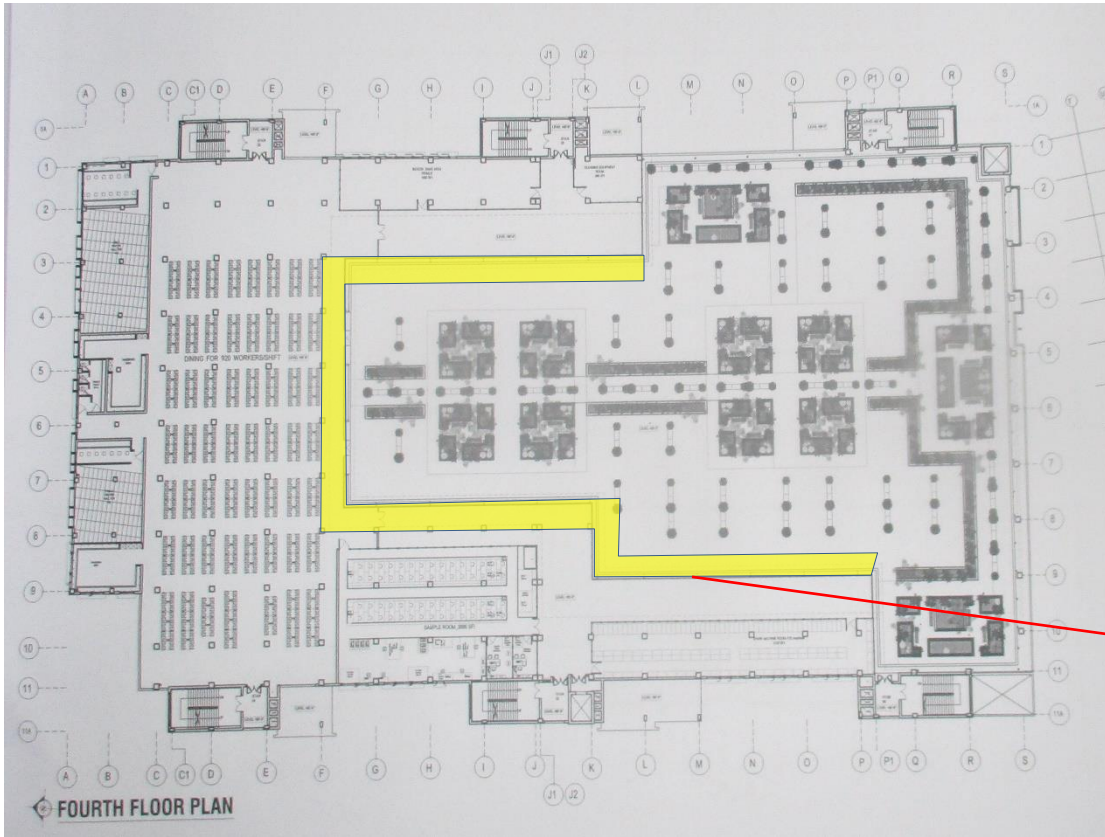
Observations



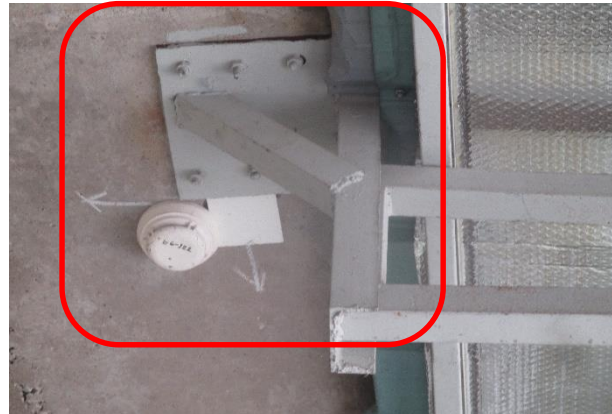
Lack of documents for fourth floor canopy



No drawings and connection details were found for canopy over the building at 4th floor. Factory engineer is required to prepare as contracted drawing with connection details for the canopy.



Fourth Floor Plan



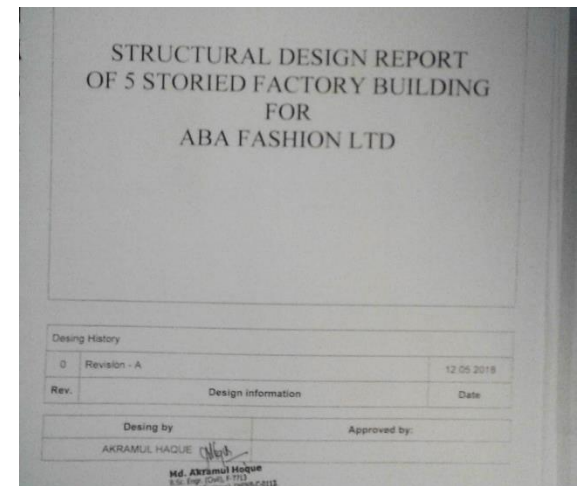
Truss connection with RC Slab



Canopy truss



**Prepared load plan & design report plan
required to be verified**



Design Report

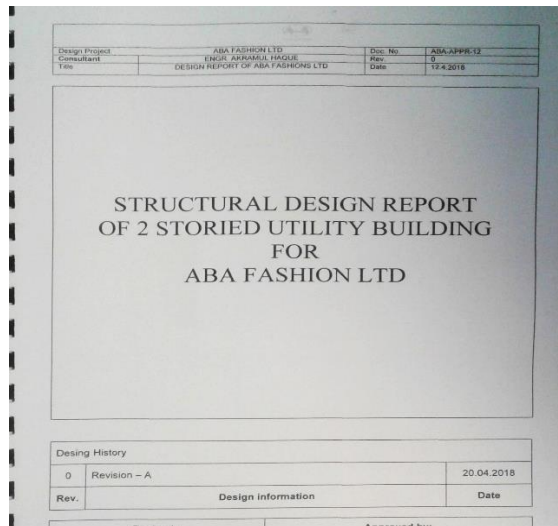


Floor loading

Factory engineer has prepared a design report and load plan considering 8 kPa maximum allowable floor loading for the RMG building. Which need to be reviewed by Accord.

Factory is required to maintain the floor live load 3 kpa until verification of prepared floor load plan.

During inspection no over loading was found. FOS calculation for internal & external columns were found satisfactory considering 3 kpa allowable floor live loading.



Design Report



Floor loading

Factory engineer has prepared a design report and load plan considering 10 kPa maximum allowable floor loading for the Utility building. Which need to be reviewed by Accord.

Factory is required to maintain the floor live load 3 kpa until verification of prepared floor load plan.

During inspection no over loading was found. FOS calculation for internal & external columns were found satisfactory considering 3 kpa allowable floor live loading.



Problems Observed

RMG Building:

Item 1: Lack of documents for fourth floor canopy.

RMG & Utility Building:

Item 2: Prepared load plan & design report plan required to be verified.



Priority Actions



Item No.	Observation	Recommended Action Plan	Recommended Timeline
1	(RMG Building) Lack of documents for fourth floor canopy	Building Engineer to survey as-built structure and prepare accurate as-built documents for the Canopy.	6-weeks
2	(RMG & Utility Building) Prepared load plan required to be verified	Maintain 3 Kpa load on all floors.	6-weeks
3	(RMG & Utility Building) Prepared load plan required to be verified	Complete the review of design report with Accord.	6-weeks
4	(RMG & Utility Building) Prepared load plan required to be verified	Produce and actively manage a loading plan for all floor plates within the factory giving consideration to floor capacity and column capacity if loading above 3 kpa is considered.	6-weeks
5	(RMG & Utility Building) Prepared load plan required to be verified	Complete remedial works arising from design report after reviewed by Accord.	6-months
6	(RMG & Utility Building) Prepared load plan required to be verified	Continue to implement load plan.	6-months